

Most Innovative Design Award



**Seminole Hard Rock Hollywood
Hotel & Casino**
Hollywood, FL

Sami Akkawi
Giovanetti Shulman Associates
Broomall, PA
Engineering and Design Firm

Mike Dillon
Bonded Lightning Protection
Jupiter, FL
LPI Member

The Hard Rock's signature guitar shape of the building made the design and installation of its lightning protection system challenging. Due to the complex geometry of the building, A spirit of cooperation was required to coordinate the variety of details and installation techniques.



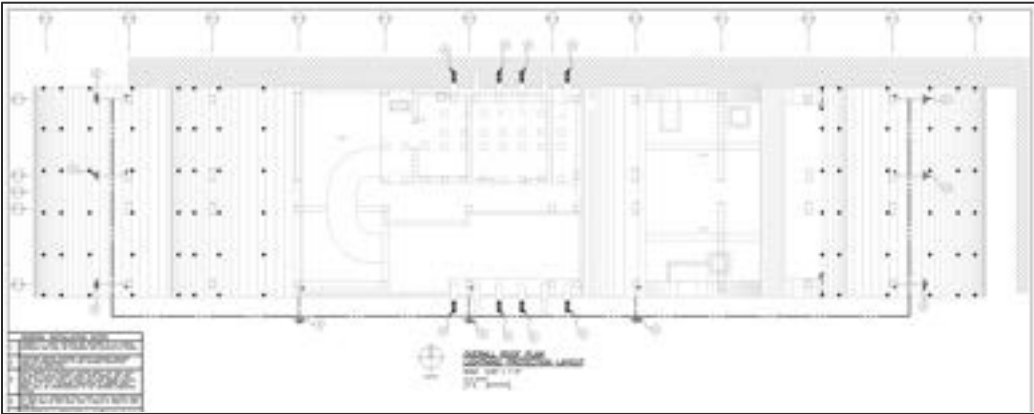
Credits: Top Pixaby\ Bottom left :
Bonded Lightning Protection Solutions

A rolling sphere analysis of the hotel determined that the curved sidewalls had potential lightning attachment points. This required the installation of air terminals on the aluminum and glass curtainwall.



Credits: Bonded Lightning Protection
Solutions

Design & Collaboration



Close collaboration with the curtainwall fabricator and installer was required to provide mounting brackets on the curtainwall, especially because the inclination of air terminals varied depending on the curved wall's changing tangent.



Similarly, the size and construction of each floor plate varied and each level required different details for attaching cables from the curtainwall to down conductors.

At some locations, air terminals could be installed from the interior as glazing progressed. Other locations required installers to rappel from upper levels.

These unique conditions required, from the get-go, close cooperation among the building's architect, engineers, curtainwall fabricator, curtainwall installer, general contractor, and lightning protection system contractor with regard to details, schedule, and access.



An additional consideration is that the project is located in a region with one of the greatest lightning densities in North America. The lightning-related risks are also increased due to the building's height and size, and the potential difficulty of evacuating sleeping guests and the large crowds in the casino and at special events.

The design team's decision to incorporate lightning protection demonstrates their professional commitment to public health, safety, and the mitigation of risks to individuals and business owners.

Special Thanks for the written documentation of this project by Michael Chusid RA FCSI, LPI Member.



Credits: Bonded Lightning Protection Solutions



Credits: Rob Olivera (CC BY 2.0)

About

The Lightning Protection Institute (LPI) is a national organization that leads the way in establishing the highest standards and guidelines for the design, installation, and inspection of lightning protection systems. <https://lightning.org/>



Credits: Bonded Lightning Protection Solutions

LPI Most Innovative Design Awards

The purpose of the Innovation Awards is to provide recognition to LPI Members and an outside individual or firm for their collaboration on the design and installation of a lightning protection system. Awards are given to a person/firm that demonstrated early coordination with an LPI professional to design an innovative solution to improve the aesthetics of the lightning protection system on a noteworthy structure.

Sami Akkawi /Giovanetti Shulman Associates

Engineering and Design Firm/ Broomall, PA/ Ft. Lauderdale, FL
<https://www.g-sa.com/>

Bonded Lightning Protection / LPI Member

Jupiter, FL <https://www.bondedlightning.com/>